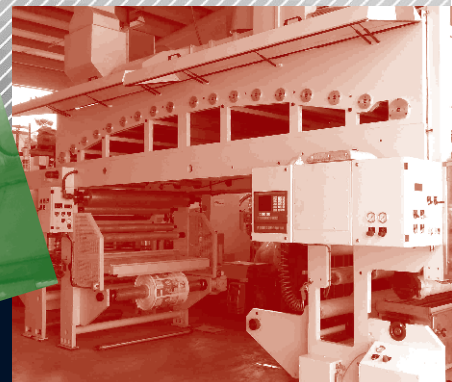
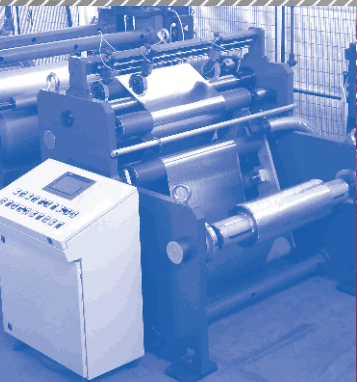


ABTECH



"We turn your ideas into business opportunities!"



Trading of used equipment

Service - New customized Machinery

Refurbishment & Rebuilding

1. Starting from either your own equipment or by sourcing used machinery for you, we can refurbish or rebuild the equipment to make it more efficient and effective so you can manufacture your products at lower cost.
2. If you need more equipment but do not want to purchase new, we offer a range of second hand machines.
3. Whether you buy through us or independently, we can dismantle, transport, install, commission, train and provide after sales service for most flexible packaging machinery.
4. If your business needs a specific customised machine that is not standard on the market, we can design and manufacture machinery that suits your exact needs.

A ABTECH S.r.l. was formed in 2012 by professionals from the field of flexible packaging with a range of skills which when combined offers the industry a unique service that the new machine manufacturers are reluctant to offer.

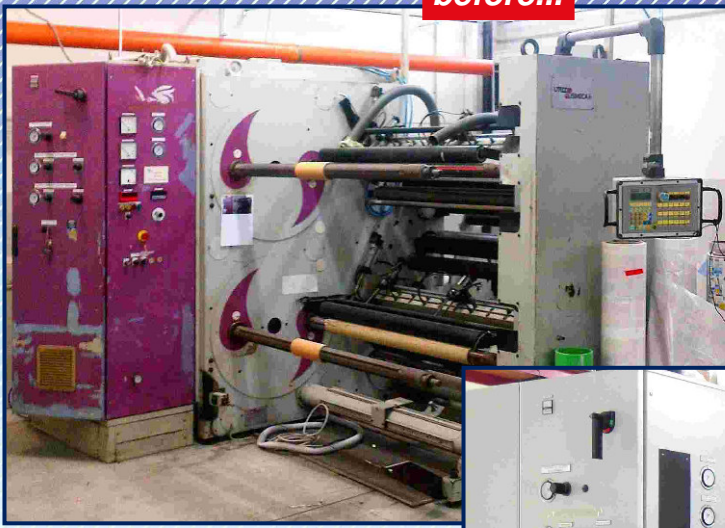
before...



...after



before...



Refurbishment - Rebuilding

...after



We operate out of a 700 square meter office and workshop with a team of experts in different departments: technical, sales, after-sales, and finance.

With our team of engineers, we can provide different levels of technical service, including the complete rebuilding of machinery that has become our hallmark.

Your place or mine? Whether asked to refurbish an existing machine or one from the market, we can do this either in our facilities or at your premises. If at your premises it is often for the reasons of damaged machinery or the cost of shipping it to us does not make financial sense.

In the case of the refurbishment in our premises, we are usually commissioned to source a machine and depending on the budget that justifies a return on investment, we can update the machine from the simplest matter of cleaning and replacing obviously worn parts, through to a complete overhaul built up from the original main frame and mechanical parts to include new mechanical, electrical and electronic components with a new cabinet (drives, plc, etc.) including new technical manuals and CE marking.



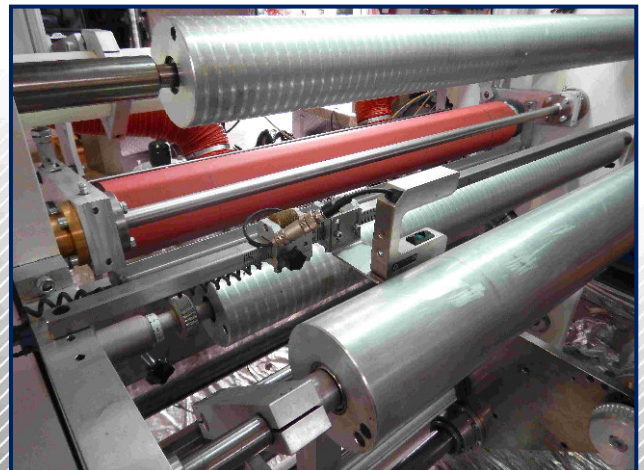
Refurbishment - Rebuilding



before...

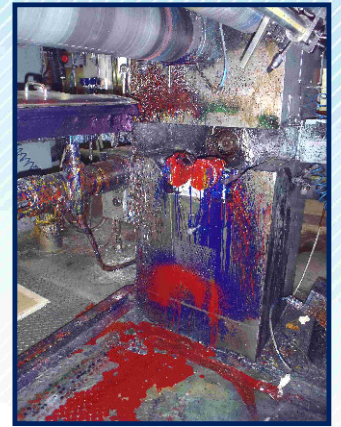


...after





before...



...after





Trading & Service



We have a constantly changing and wide catalogue of used equipment ready for delivery or that can be renewed depending on our customers' needs and budget. The sale of a used machine is only part of our customers' needs. An equally important part is the provision of all services related to the sale - dismantling, transport, commissioning, training, and after-sales assistance. Our skilled technicians and commercial department are doing this all over the world.



A "A machine is just that, a machine". What it will produce is what you sell and base your business and profitability on. We understand this, which is why our offering is tailored to your needs, not ours. To be constantly updated on the machines that we have available, we recommend you to visit our website (www.abtechitaly.it) and subscribe our newsletter. You can also contact us or our business partners directly, and we will be very happy to find the equipment that suits your production requirements and budget.





The ABTECH Srl team of highly skilled technicians has worked for years in the field of flexible packaging. *Good for your businesses or theirs?* We know that the major machinery manufacturers are constantly trying to produce standard machinery from standard parts for reasons of economics. In many cases this suits both you and them, but there are times when your business needs something a bit special to stand out from your competitors or to take advantage of a niche market.

Having been asked to fulfill this need by many customers, we decided to specialize in the design and manufacture of highly customized equipment groups as well as full lines. The main technologies that we deal with are: rotogravure and flexo printing; coating of lacquers, resins and adhesives; lamination groups; embossing of aluminum foil; slitters; extrusion and extrusion coating.

Examples of what our customers have asked us for that suited their requirements for the packaging of specific products, we developed and built the following machines:

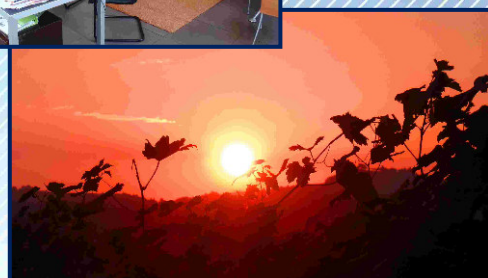
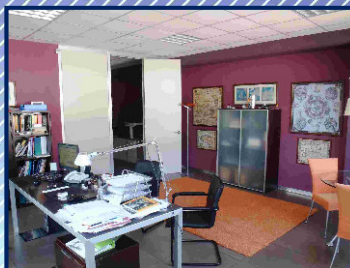
1. A complete line for the embossing of thin aluminum foil which was then laminated with paper. It is a machine used in the manufacturing of products for packaging chocolate, butter, suop cubes, etc.
2. Vinylic laminator for paper and plastic films. It is a very flexible machines to manufacture laminated materials used for the packaging of confectionery products and for the closure of aluminum trays of prepackaged foods.
3. Doctor machine for plastic films, paper and laminated materials.

If you need a specific type of machine that will help your production and business, please contact us.



TECHNOLOGIES

Printing
Coating
Lacquering
Hot-melt
Lamination
Embossing
Extrusion
Slitting
& Cutting



ACTIVITIES

Trading
Refurbishment
Rebuilding
Upgrade
Manufacturing
Commissioning
Service
Spare parts
Training
Consultancy



Converting Machinery and Equipment
for Flexible Packaging Products

ABTECH S.r.l. - Corporate Headquarters, Workshop, Warehouse:
Loc. Sant'Anna - Zona industriale Rivetto, 107 - 12040 MONTEU ROERO (CN) - ITALY
Tel. +39 0173 978254 - Mobile +39 337 254471 - Fax +39 0173 5972513
www.abtechitaly.it - mail: info@abtechitaly.it - abtech@abtechitaly.it
Registered office: Piazza Michele Ferrero, 2 - 12051 ALBA (CN) ITALY

Represented by

